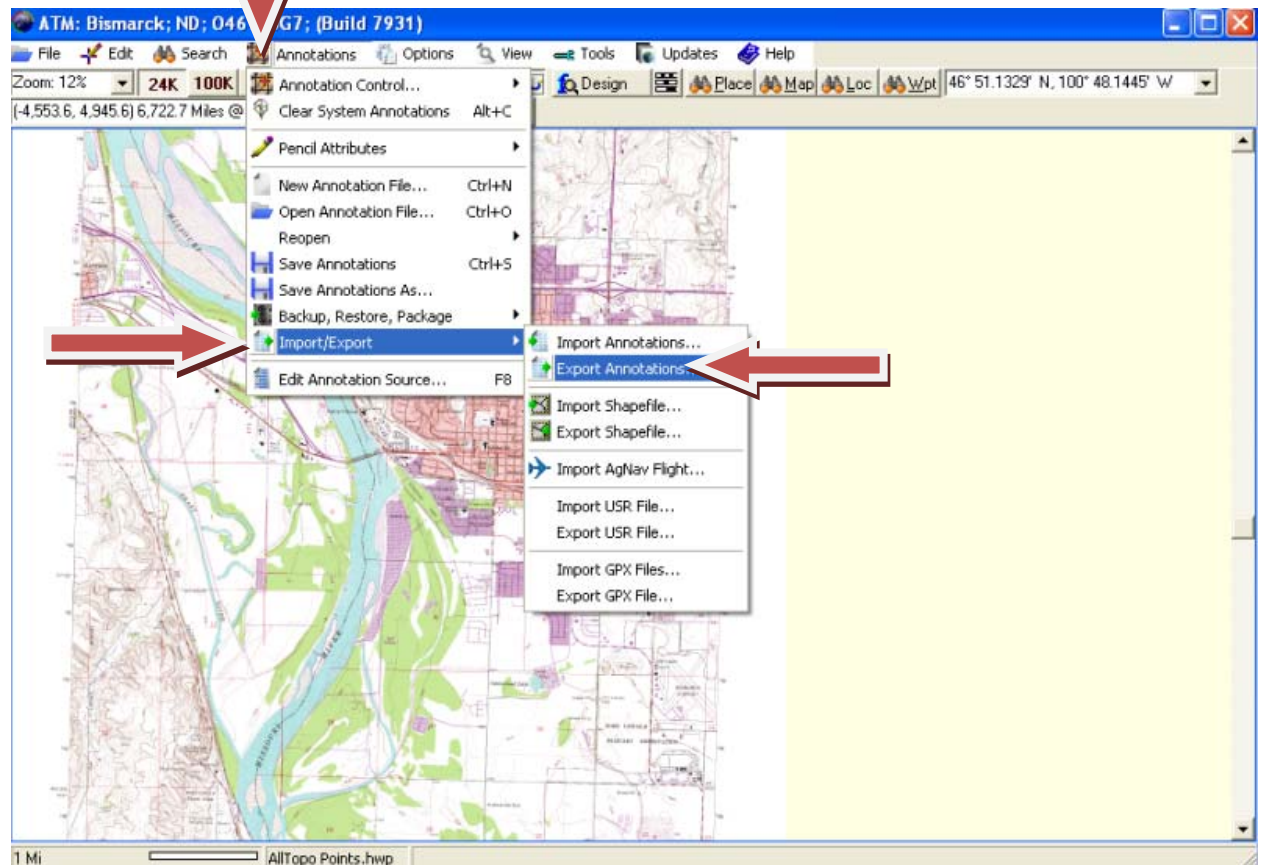


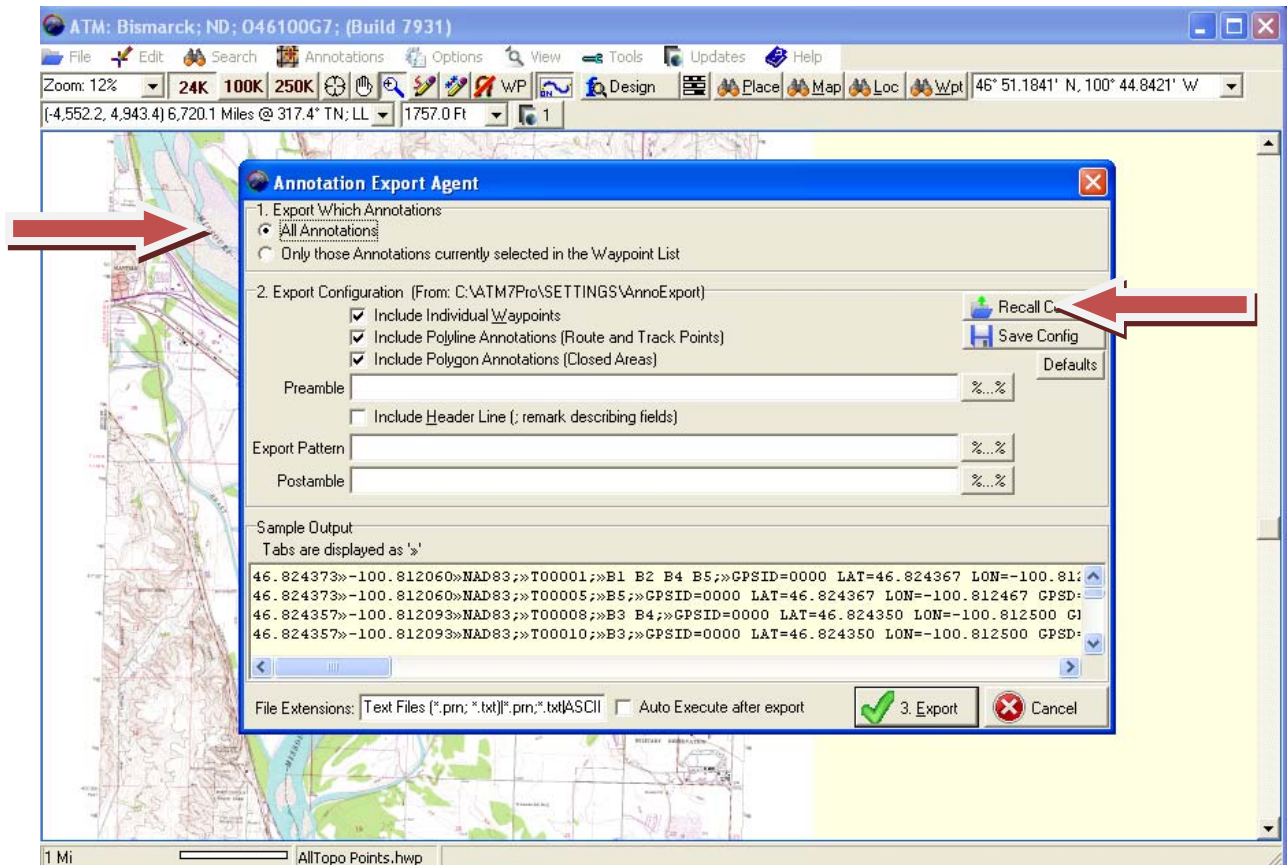
Exporting Alltopo points to Google Earth

Step 1



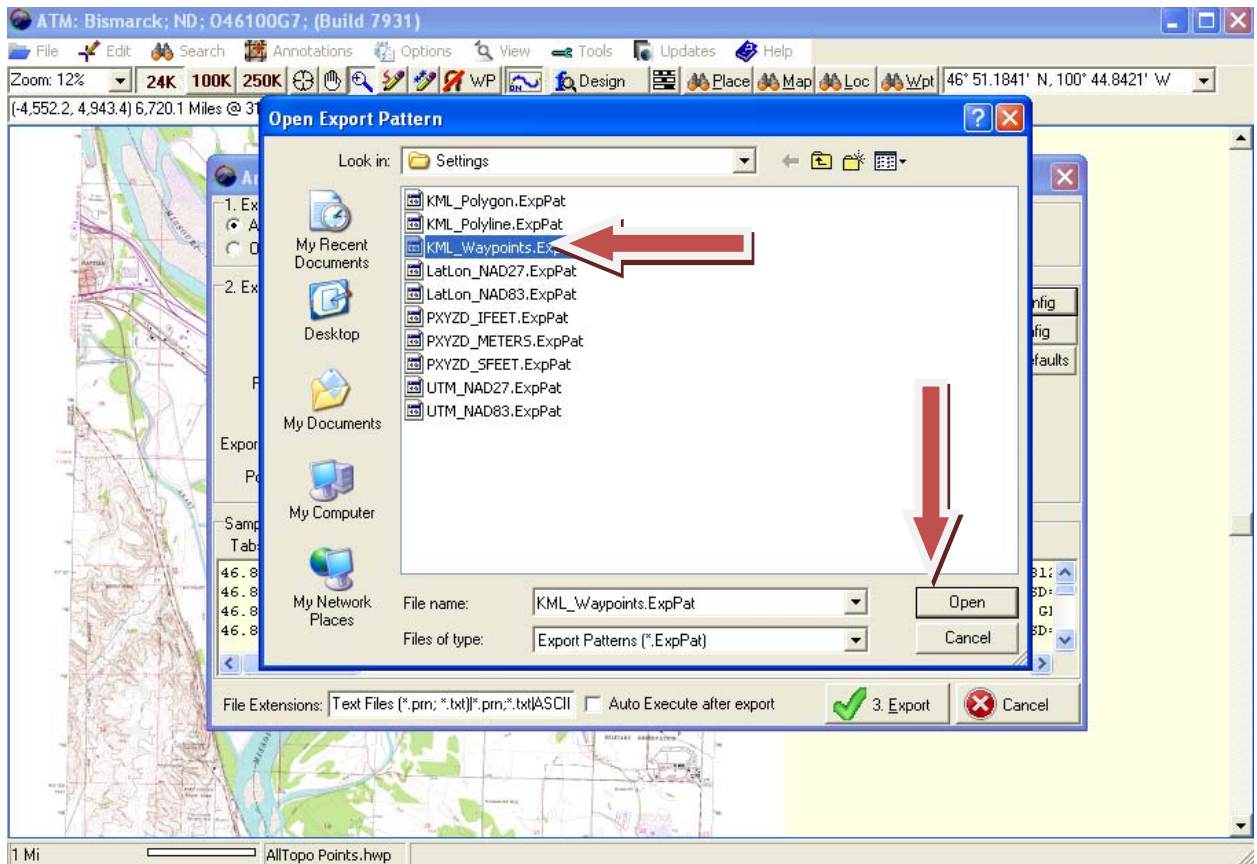
Click "Annotations", and then hover over "Import/Export", then click "Export Annotations". This will export your points to Google Earth.

Step 2



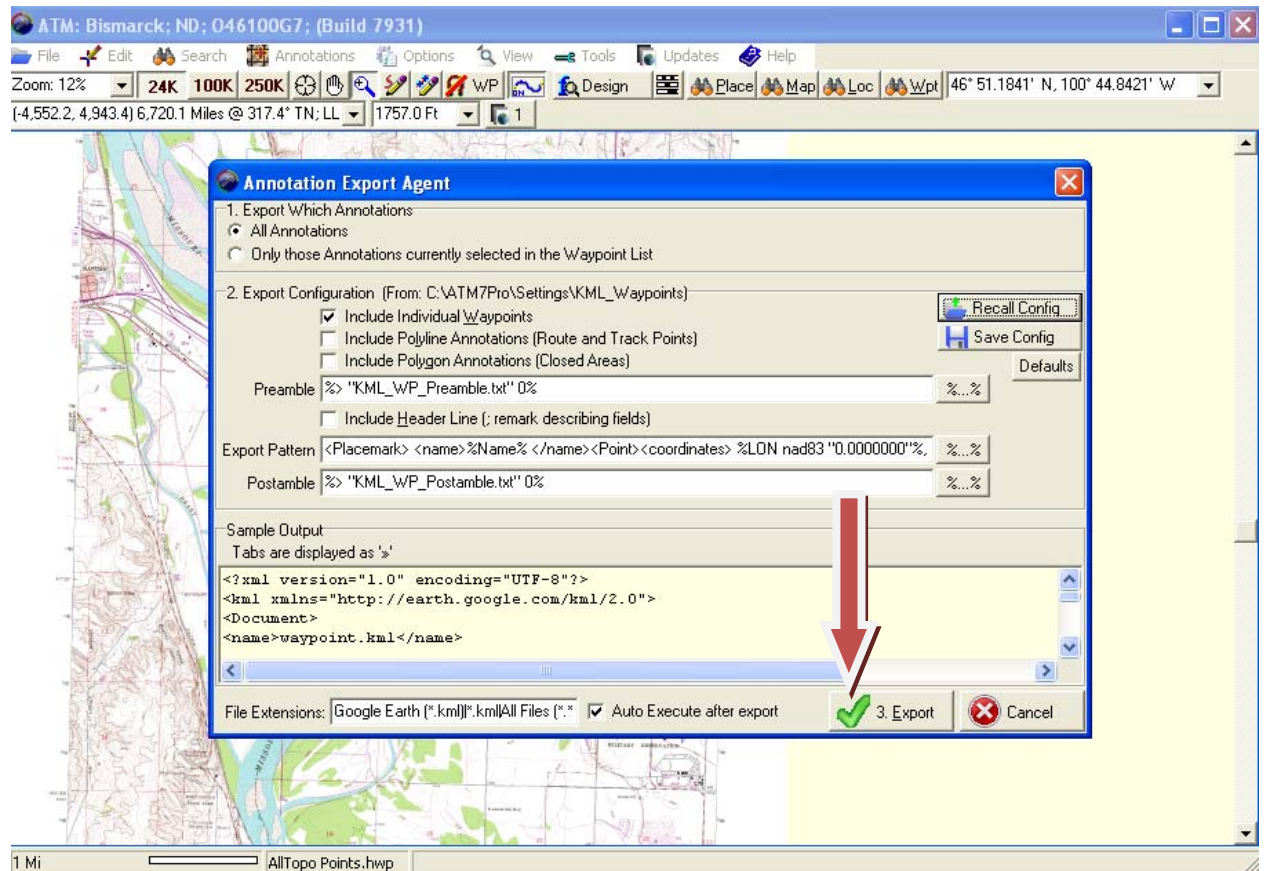
When the “Annotation Export Agent”, click “All Annotations”, click “Recall Config”.

Step 3



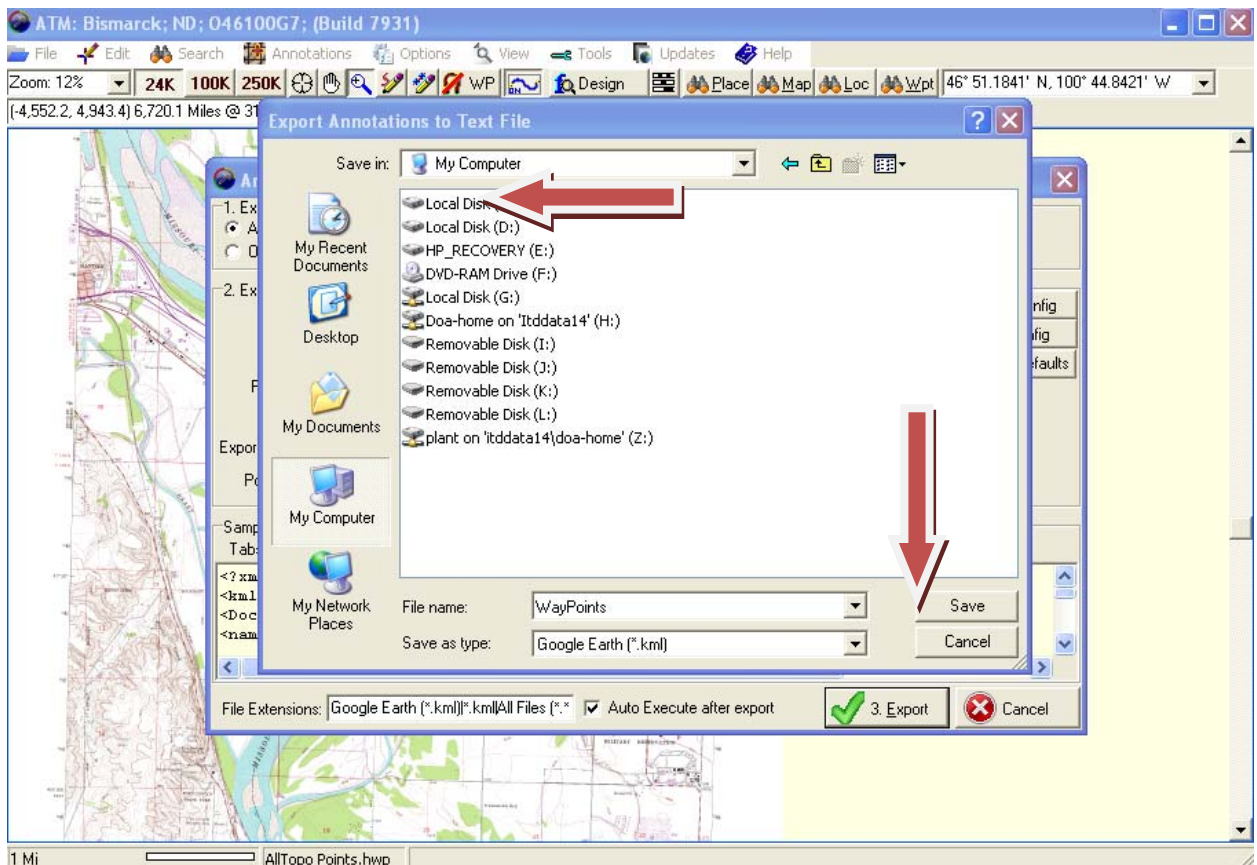
Click KML_Waypoints.ExpPat. , then click “OK”.

Step 4



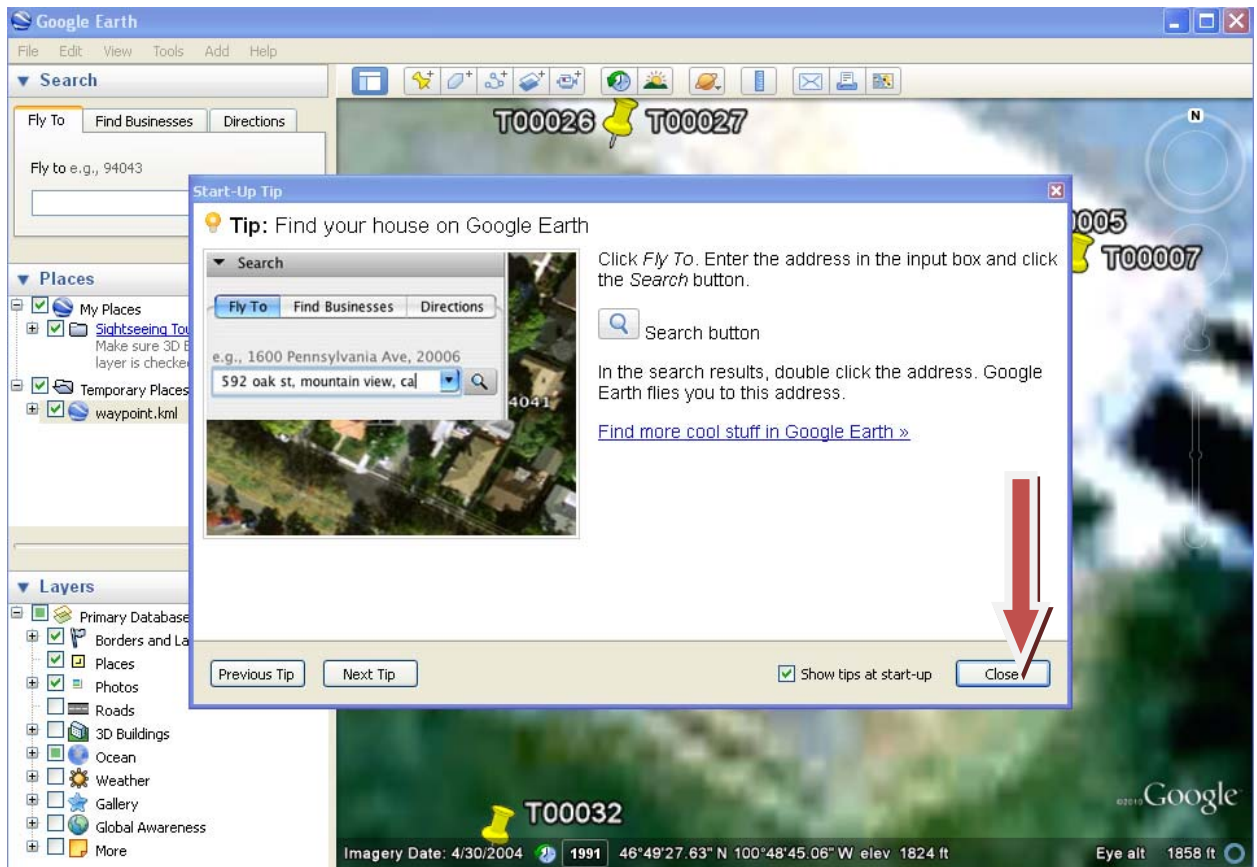
Make sure you "Annotation Export Agent" looks similar to this example. Click "Export".

Step 5



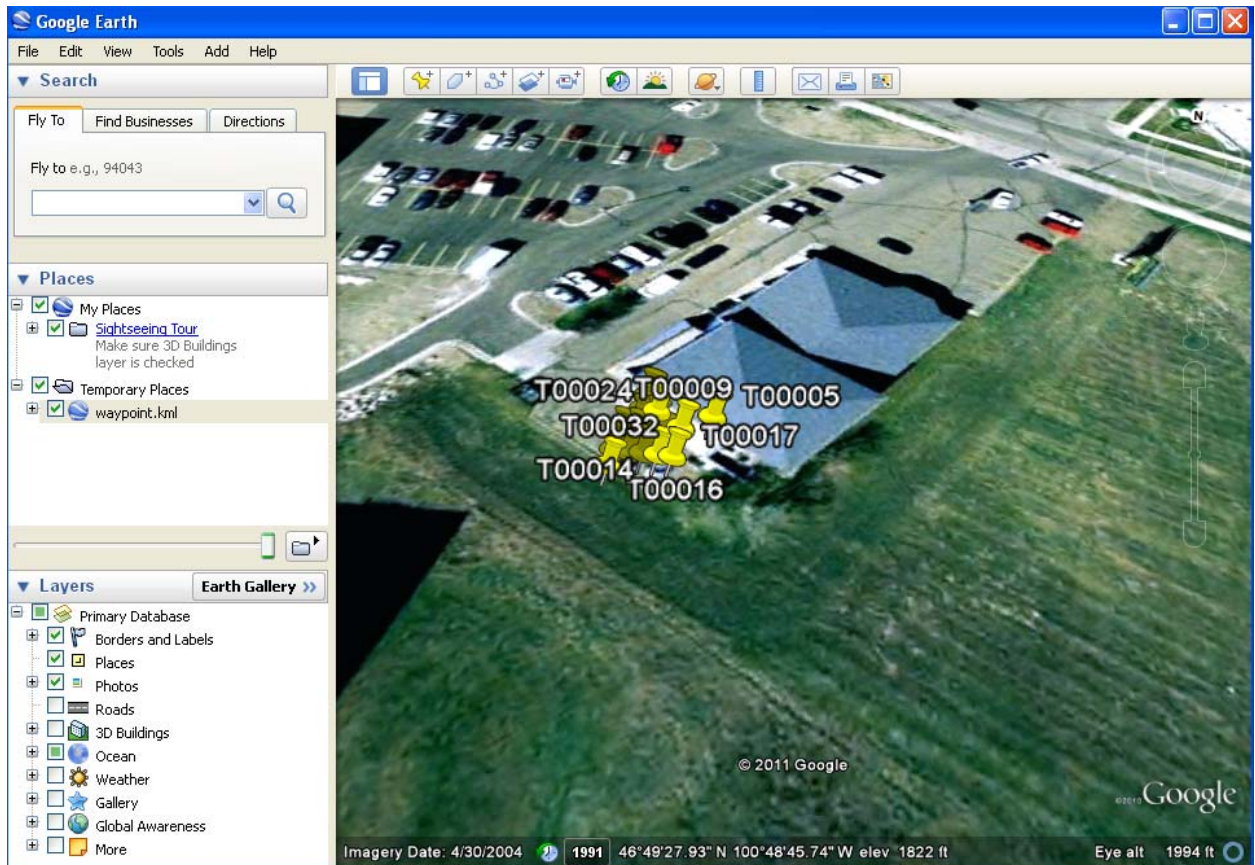
Choose the location you wish to save your files in. This is typically in your C drive in your ATM7Pro folder, but the choice is yours (Just make sure you remember where you saved your information to). Name your file. This can be the same name as your point file. Click "Save".

Step 6



Notice that Google Earth automatically loads up, and should go directly to the points that you just uploaded to it. Close out of the “Start-Up Tip” dialog box. After doing this, you can scroll and pan around to get the best view for your application.

Step 7



You can see the push pins that represent the points that you collected.

NOTE: This image will be different from yours.

Congratulations!!!