

# Installing AllTopo Maps

Note: When trying to download your points into AllTopo, and you get an error to load the appropriate “Map disc”, follow these simple steps.

## Step 1

Insert the disc that the program prompts you to insert. If you do not want to potentially keep getting an error, insert each disc, and follow the steps below for each one.

## Step 2



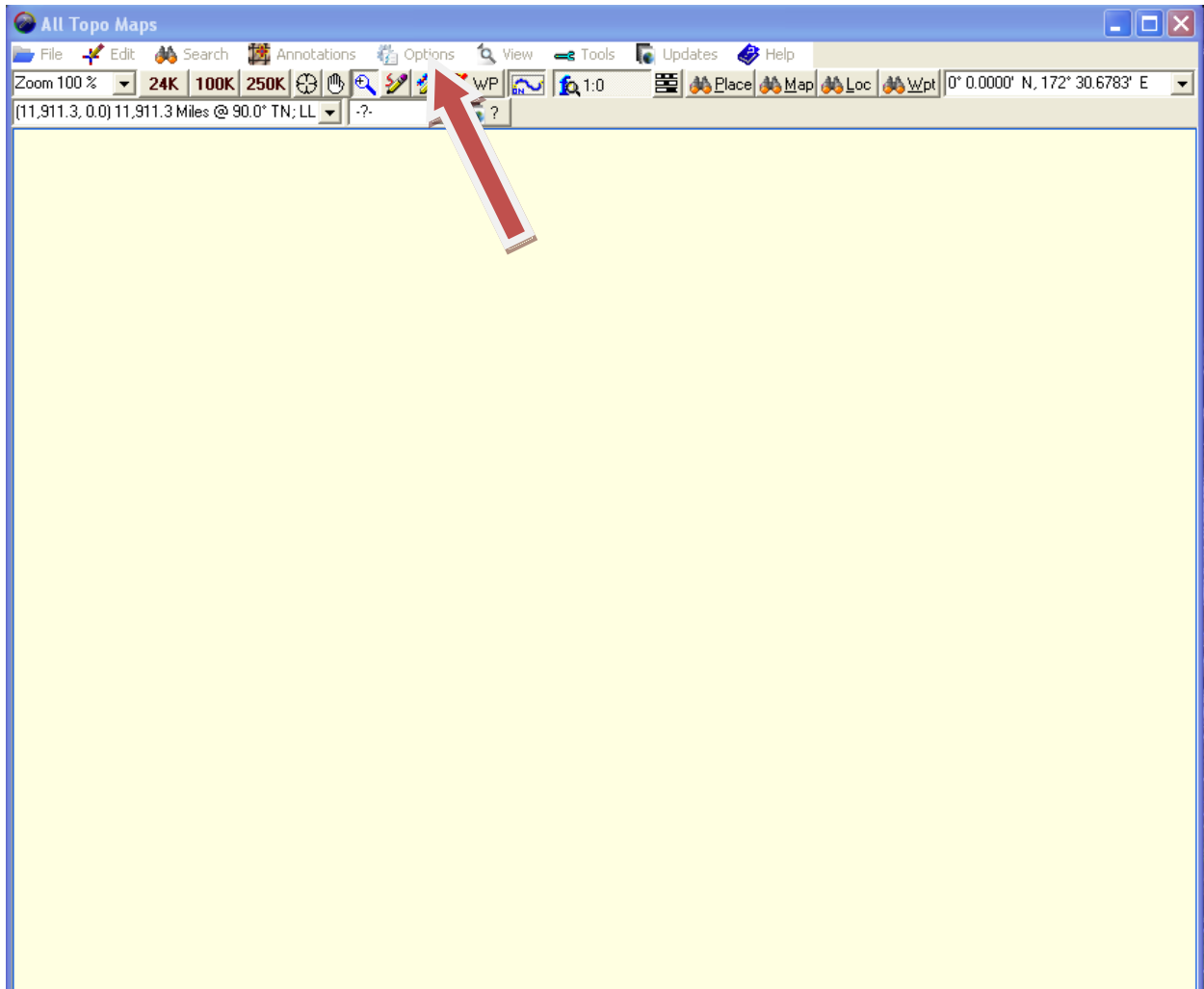
Open AllTopo.

## Step 3



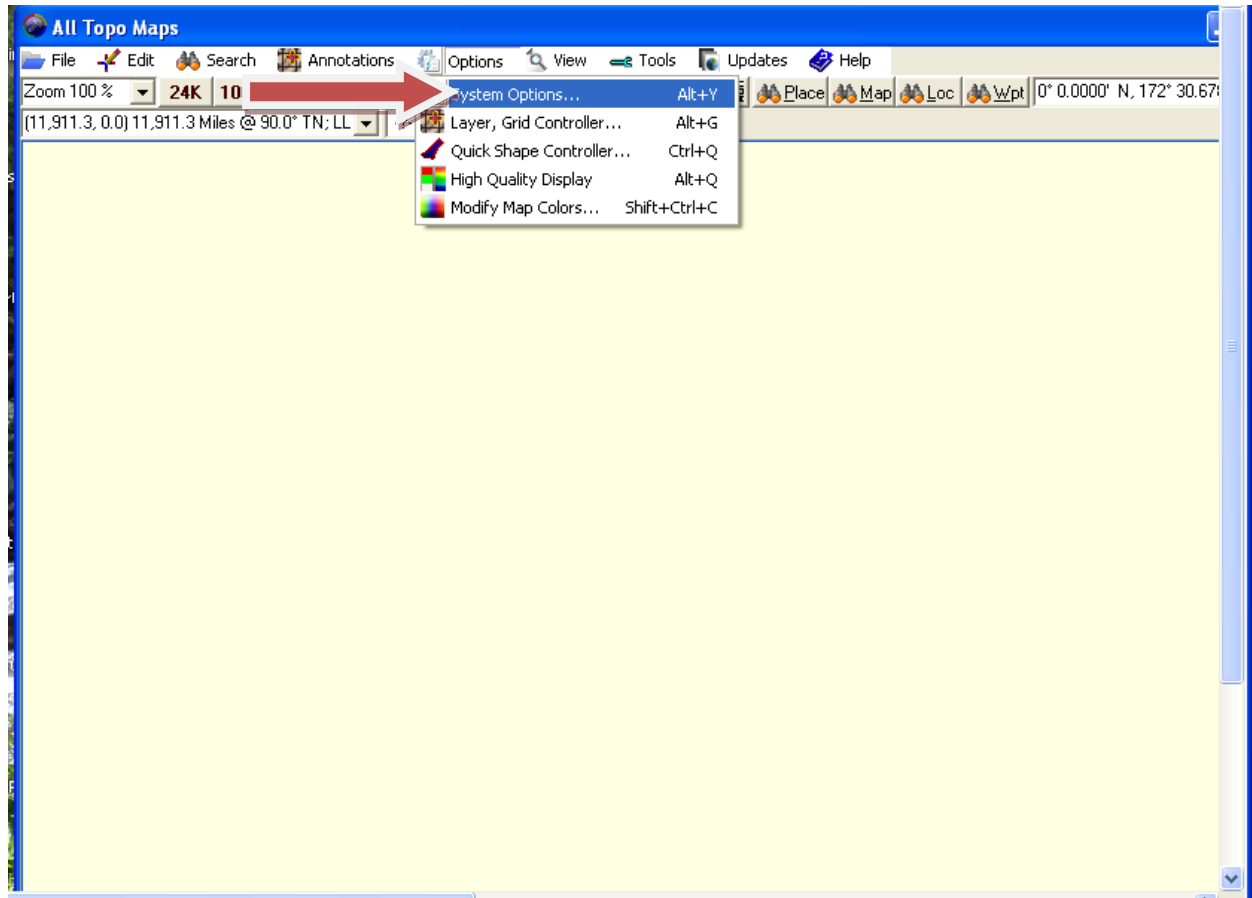
Uncheck the “Open Last Project” box and click “OK”.

## Step 4



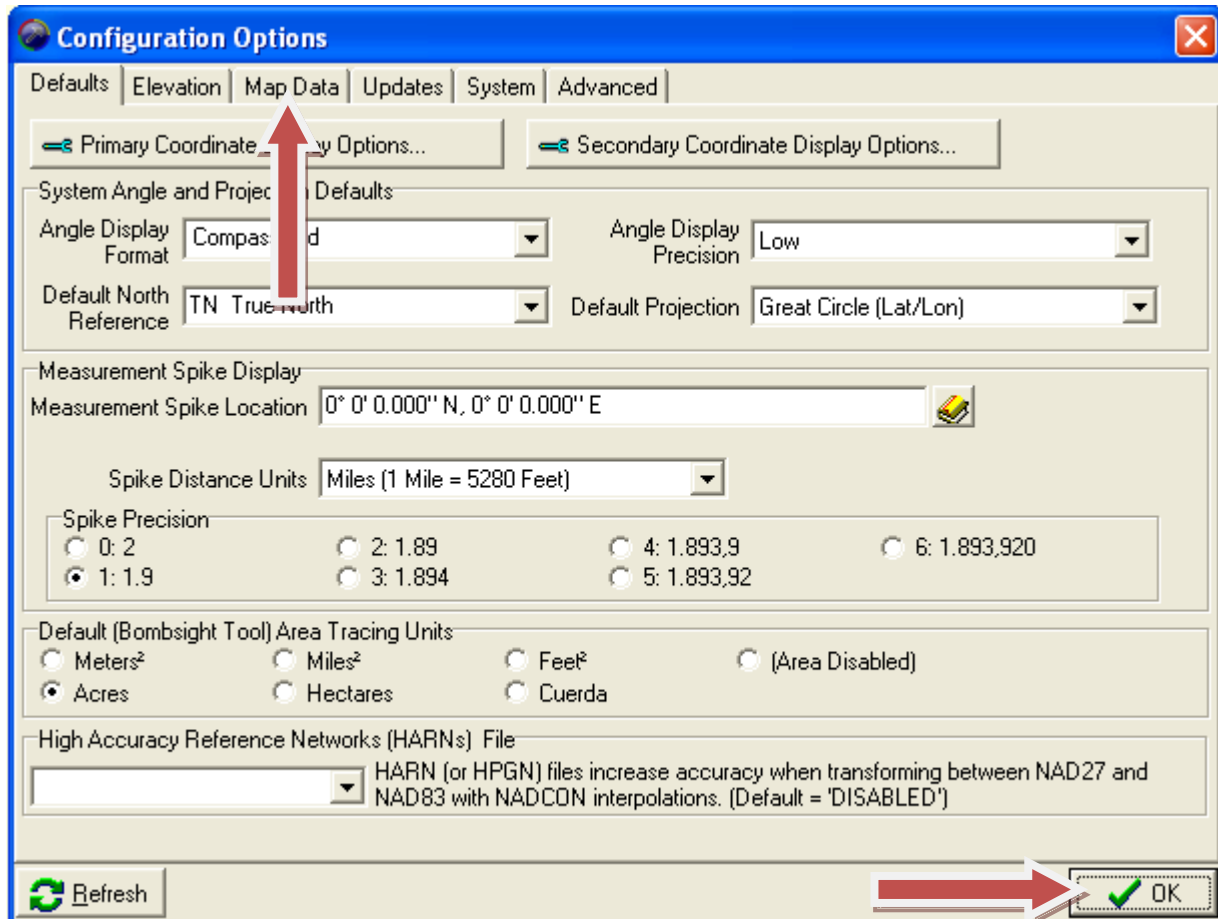
When the window opens up, click “Options”.

## Step 5



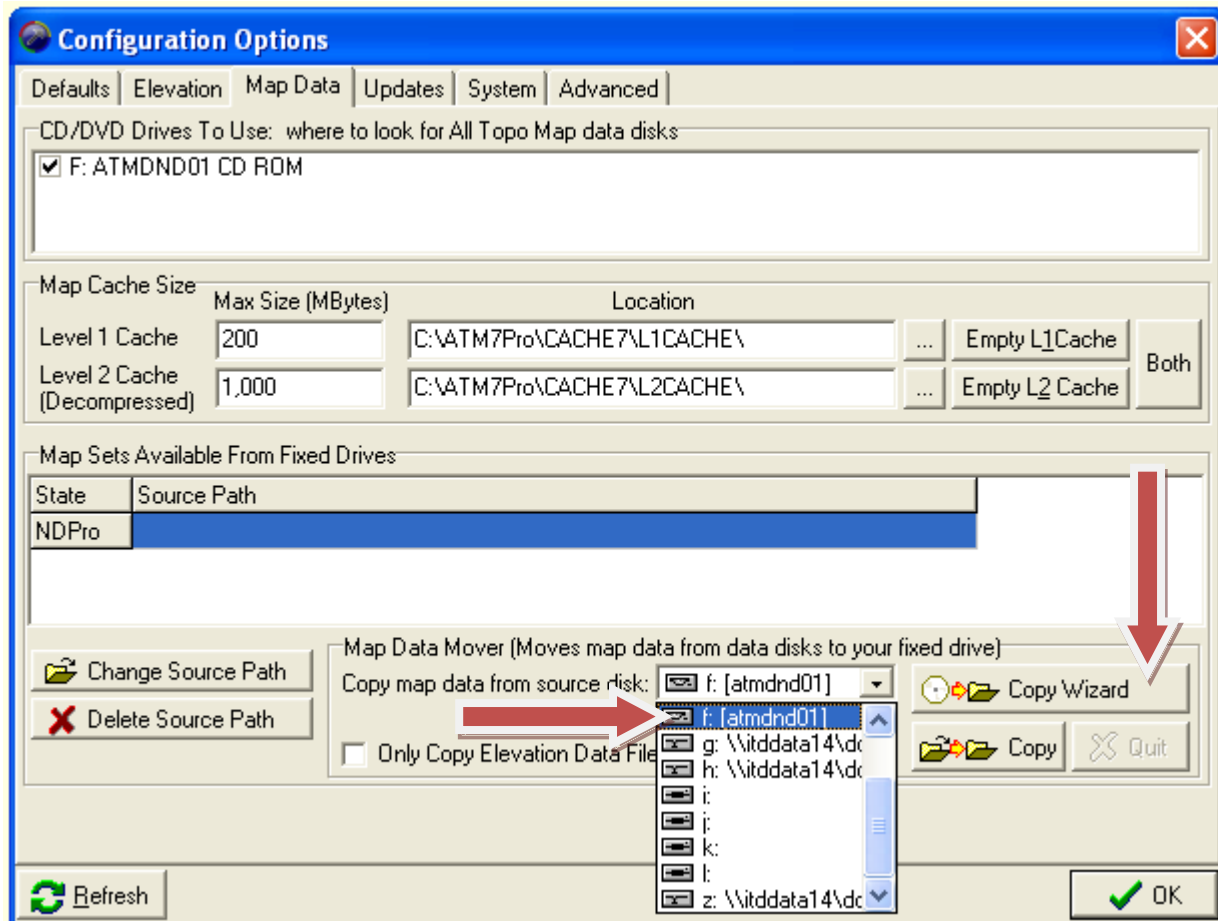
Click "System Options".

## Step 6



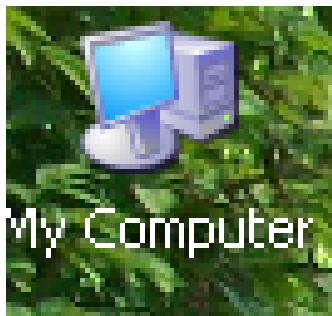
Click "Map Data", and then click "OK".

## Step 7



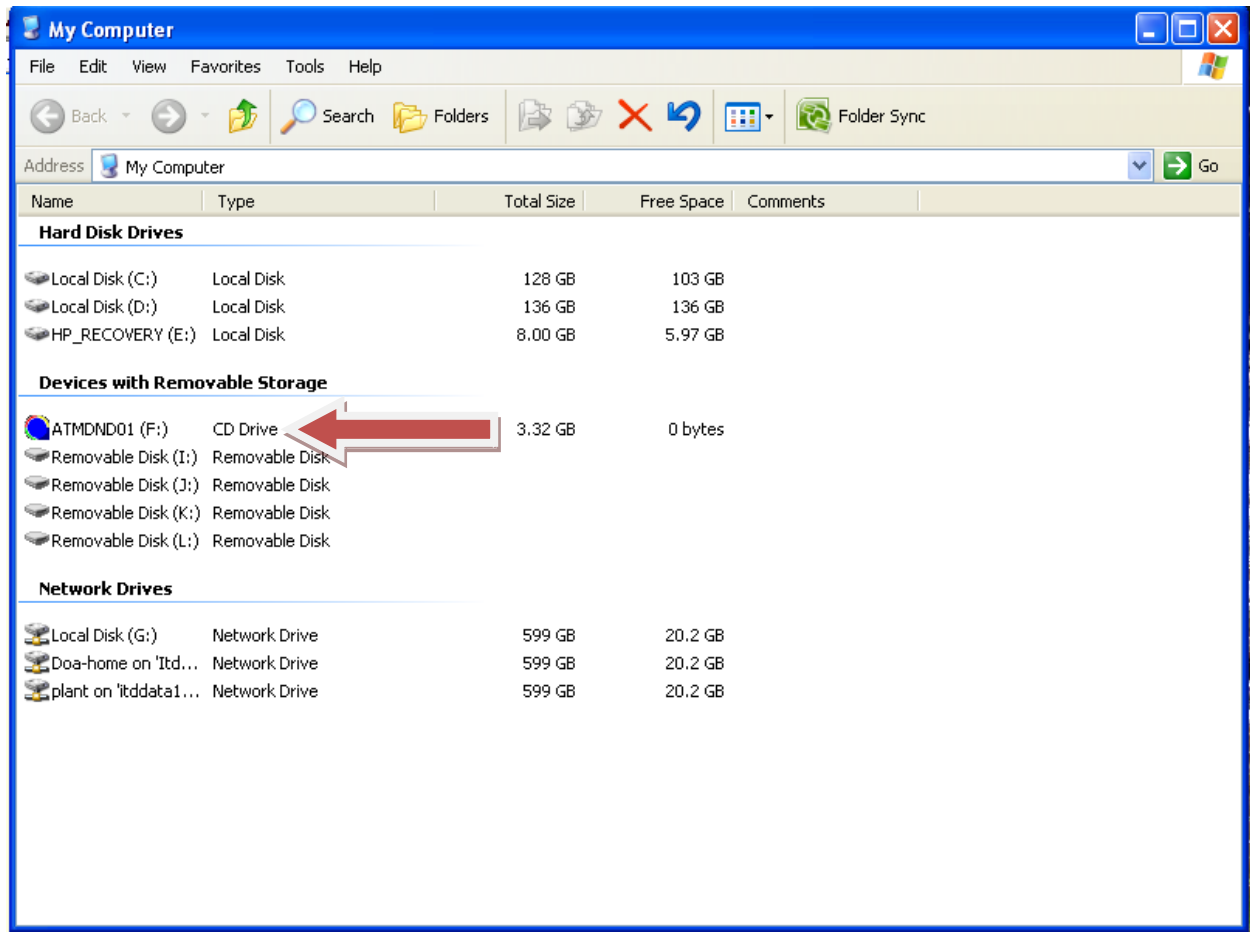
Click the dropdown arrow on the “Copy map data from source disk”, and choose the correct drive. If you do not know which one it is, go to the next step, otherwise click “Copy Wizard” and proceed to step 10.

## Step 8



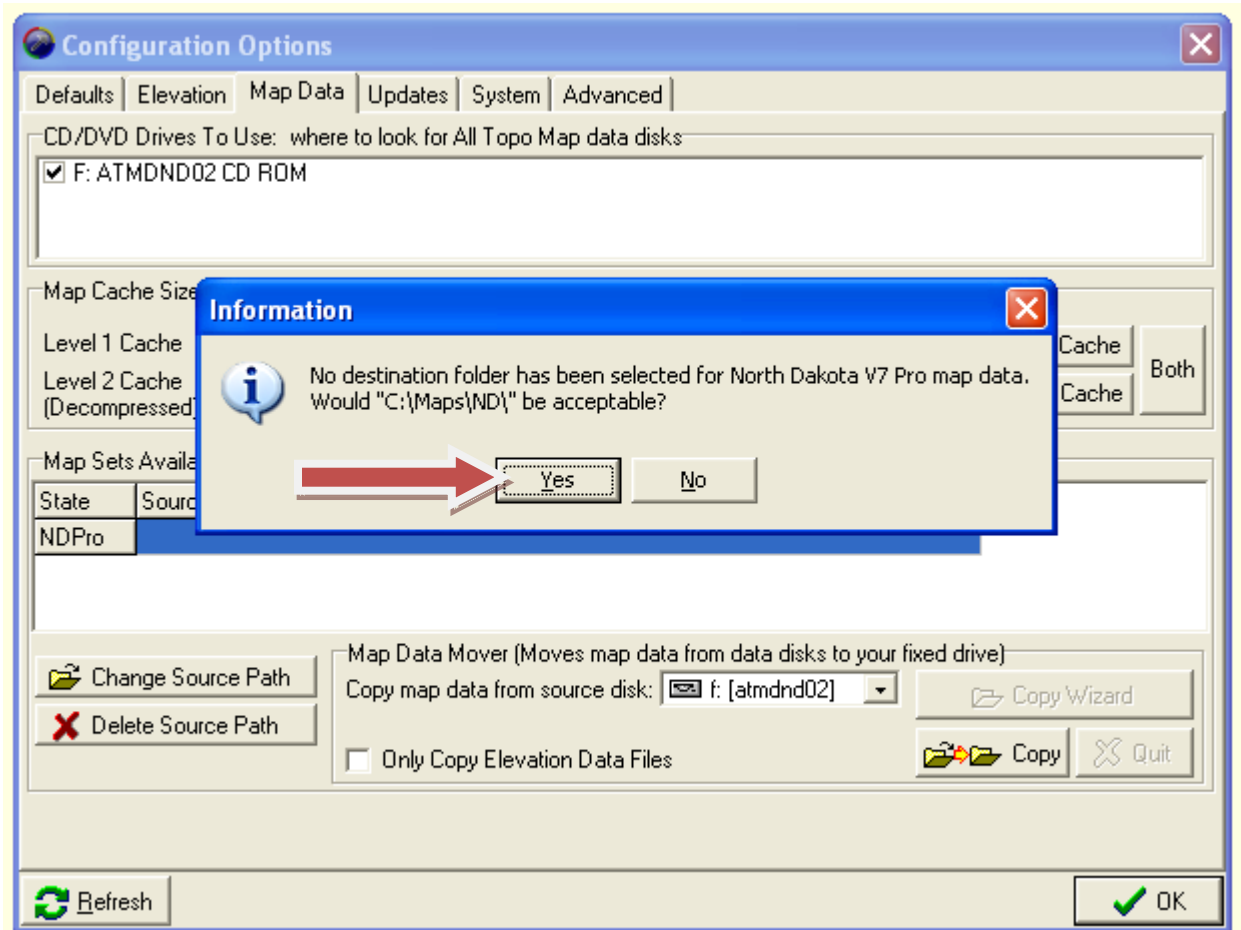
Double click on the “My Computer” icon, or navigate to where you can open “Computer” or “My Computer”.

## Step 9



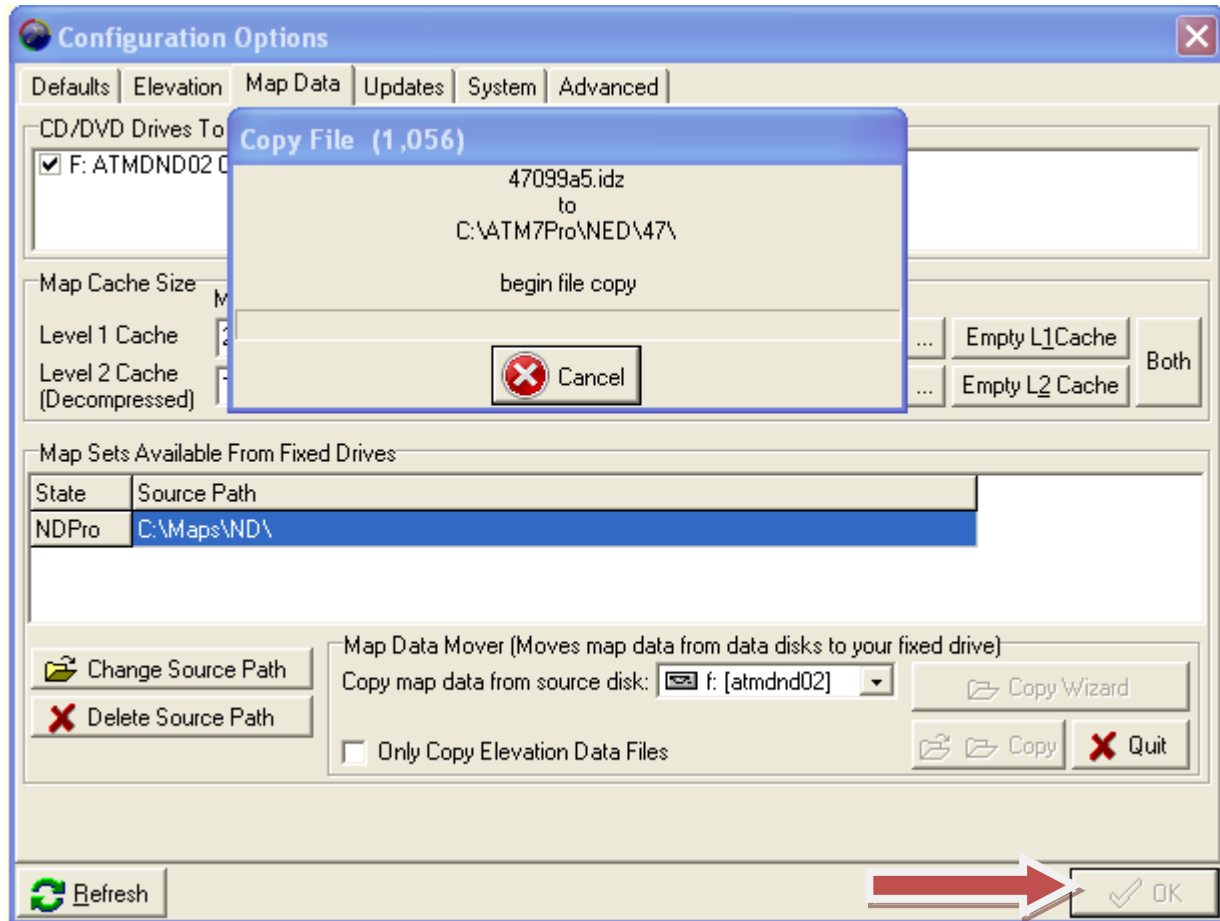
Notice the “AllTopo” logo on drive F (CD Drive). Remember this!

## Step 10



If you get this error, click "yes", and re-try again a couple of times. If it does not work, call James Hansen at the North Dakota Department of Agriculture at 701-328-2330.

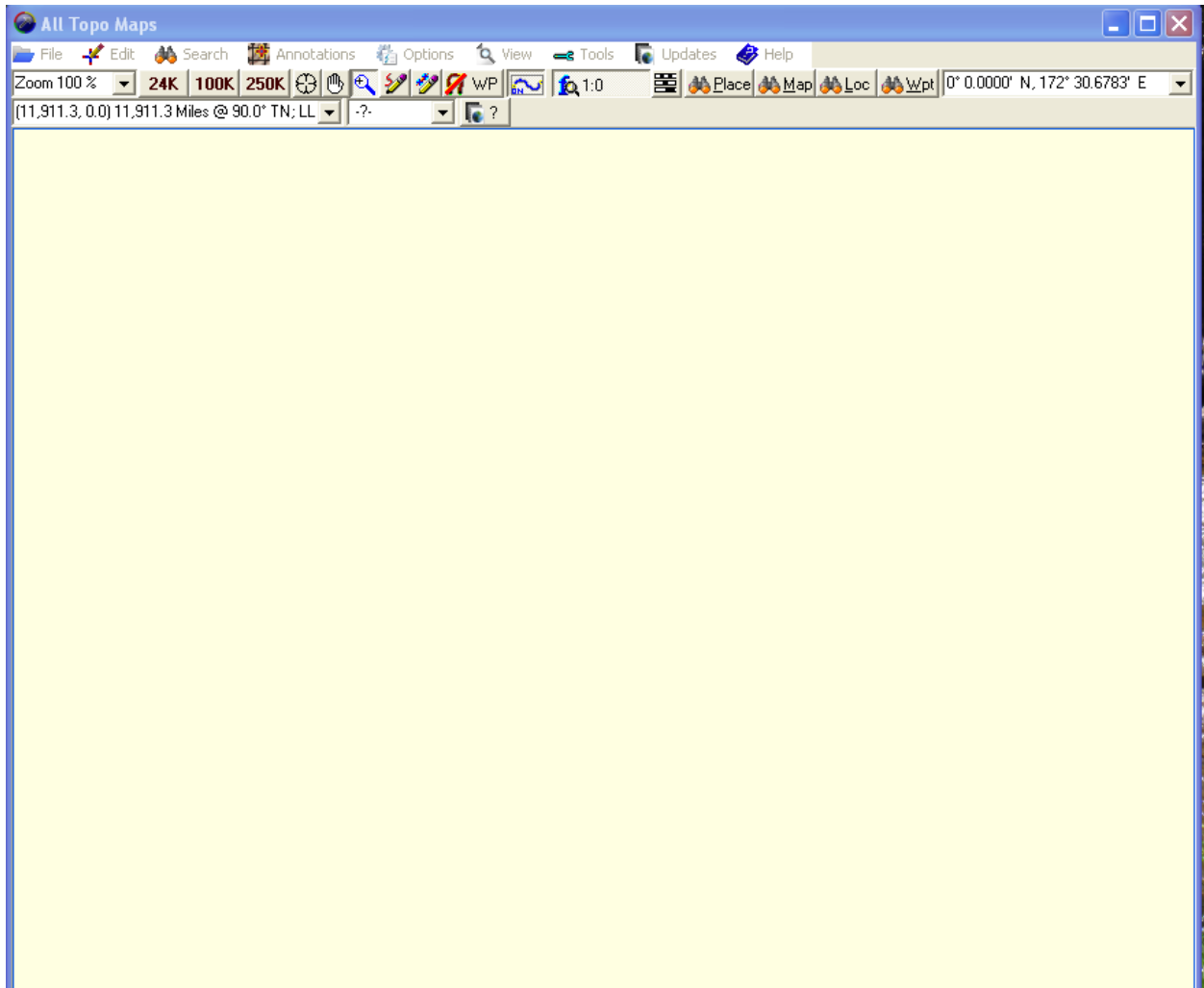
## Step 11



Wait until the file finishes copying (you will see a progress box indicating that the files are copying), click "OK" when it becomes selectable.



## Step 12



At this point you can install the next map disk following the same steps you completed. Otherwise when you see this screen, you are ready to proceed to downloading your points on an Alltopo map.

**Congratulations, you have just completed the installation of your North Dakota map disks!!!**